

QUICK INDEX

A complete and detailed index can be found at the back of this book.

NAME: _____

CUSTOMER #: _____

TOLL-FREE ORDER LINE / CUSTOMER SERVICE
877-477-7823

ORDER DESK HOURS (PST)

Mon. - Fri.: 5:00am - 6:00pm, Sat.: 7:00am-3:30pm

SHOP ON-LINE

www.aircraftspruce.ca

NINE REGIONAL WAREHOUSES

AIRCRAFT SPRUCE WEST ADMINISTRATION & HEADQUARTERS

225 Airport Circle, Corona, CA 92878

Phone: (951) 372-9555 • Fax: (951) 372-0555

www.aircraftspruce.ca

AIRCRAFT SPRUCE EAST

452 Dividend Drive, Peachtree City, GA 30269

Phone: (770) 487-2310 • Fax: (770) 487-2308

AIRCRAFT SPRUCE MIDWEST

1110 Commerce Dr., West Chicago, IL 60185

Phone: (630) 231-3570

AIRCRAFT SPRUCE NORTHEAST

1431 Stoneridge Dr., Middletown, PA 17057

Phone: (717) 233-5733 • Fax: (717) 233-5738

AIRCRAFT SPRUCE SOUTH

600 Railhead Road, Suite 236, Fort Worth, TX 76106

Phone: (817) 624-9882 • Fax: (817) 625-8936

AIRCRAFT SPRUCE SOUTHWEST

2120 S Douglas Dr., Chandler, AZ 85286

Phone: (480) 963-6936 • Fax: (480) 899-0324

AIRCRAFT SPRUCE CANADA

27 York Rd., Brantford, ON N3T-6H2

Mailing: P.O. Box 3731

Phone: (519) 759-5017 • Fax: (800) 329-3020

www.aircraftspruce.ca

AIRCRAFT SPRUCE ALASKA

1692 N Aircraft Spruce Circle, Palmer, AK 99645

Phone: 907-373-5300 • Fax: 519-759-8964

AIRCRAFT SPRUCE AUSTRALIA

3 Fairborne Way, Keysborough, Vic 3173

Phone: 907-373-5300

NOTICE! Many parts in this catalog are NOT FAA approved.

Unless our catalog specifically indicates a part has a PMA (Parts Manufacturers Approval), that part may not be certified or approved for aviation use. The selling of a part should not be construed as a representation that the part is certified or approved for aviation use, nor can Aircraft Spruce & Specialty Co. include instructions for use or warnings unless provided by the manufacturer or distributor. Any concerns the purchaser may have about the suitability of a part for aviation use, instructions for use or warnings, should be promptly directed to the manufacturer.

WAIVER OF LIABILITY AND INDEMNIFICATION AGREEMENT

In as much as Aircraft Spruce & Specialty Co. has no opportunity to supervise the manufacture, installation or maintenance of the parts supplied by it, nor any opportunity to participate in the design or manufacture of the various certificated and homebuilt aircraft in which its parts are utilized, the purchaser by placing this order and accepting said merchandise from Aircraft Spruce & Specialty Co. agrees that all materials purchased will be used solely at purchaser's risk and that purchaser will indemnify and hold Aircraft Spruce & Specialty Co., its owners and employees, free and harmless from all loss, liability or damage resulting from claims brought by reasons of any alleged failure or defect of any part or parts supplied by Aircraft Spruce & Specialty Co.

COMPOSITE MATERIALS (CM) Pg. 8 – 28

Glass Cloth, Resins, Foams, Tools, Safety Equipment, Kevlar, Graphite

WOOD PRODUCTS (WP) Pg. 29 – 35

Spruce, Balsa, Plywood, Glues

METALS & PLASTICS (ME) Pg. 36 – 47

4130 Steel, Aluminum, Tubing, Sheet, Rod, Bar, Angle, Hinge, Copper Tubing, Firewall Metals, Trailing Edge, Channel, Plastics, Plexiglas, Lexan, Nylon, Phenolic & Acrylic Tube Rod

HARDWARE (HA) Pg. 48 – 109

Bolts, Nuts, Washers, Screws, Fittings, Fasteners, Rivets, Nails, Rivnuts

AIRFRAME PARTS (AP) Pg. 110 – 266

Rubber Goods, Grommets, Hose O-Rings, Shock Mounts, Shock Cords, Channels, Control System Components, Fuel Supplies, Bearings, Tie Rods, Throttles & Controls, Propellers, Spinners, Cowlings, Windshields, Seat Belts & Harnesses

LANDING GEAR (LG) Pg. 267 – 316

Wheels & Brakes, Tires & Tubes, Axles, Tailwheels

ENGINE PARTS (EP) Pg. 317 – 453

Magnetos, Carburetors, Starters, Generators, Alternators, Spark Plugs, Ignition Harnesses, Engines, Exhaust Stacks, Engine Mounts, Air & Oil Filters

COVERING SUPPLIES (CS) Pg. 454 – 527

Fabric, Tapes, Inspection Rings, Grommets, Paint Brushes, Dopes, Thinners, Finishes, Chemical Products, Registration Stencils, Placards, Decals, Hand Sanitizers

INSTRUMENTS (IN) Pg. 528 – 603

Vacuum Pumps, Pitot Tubes, Shock Mounts, Instrument Overhaul, Tachometer Cables

ELECTRICAL (EL) Pg. 604 – 696

Batteries, Lights, Strobes, Electrical Wire & Terminals

AVIONICS (AV) Pg. 697 – 797

Custom Panels, Radios, Antennas, ELT's, Encoders, GPS, Headsets, Intercoms, Accessories

TOOLS (TO) Pg. 798 – 895

Tubing Benders & Cutters, Rivet Guns, Wire Twisters, Spray Guns, Welding Equipment, Spark Plug Tools, Safety Equipment

PILOT SUPPLIES (PS) Pg. 896 – 1010

Oxygen Equipment, Tiedown Kits, Goggles, Sunglasses, Videos, Charts, Flight Cases, Tow Bars, Parachutes.

BOOKS & VIDEOS (BV) Pg. 1011 – 1050

Construction & Aviation Videos, Instructional Materials, Pilot Guides, Log Books, Aircraft Manuals, General Aviation Books, E-Books



COPYRIGHT © 2024 AIRCRAFT SPRUCE & SPECIALTY COMPANY USE OF ANY MATERIAL DISPLAYED HEREIN IS PROHIBITED WITHOUT WRITTEN PERMISSION.

CM

WP

ME

HA

AP

LG

EP

CS

IN

EL

AV

TO

PS

BV

ORDERING INFORMATION

AIRCRAFT SPRUCE PRICING POLICY

Aircraft Spruce has always taken great pride in offering aircraft builders/owners the lowest overall prices in the industry. Many items in the catalog now show discounts for various quantity purchases. Special quotations on other quantity purchases gladly furnished on request. Our online catalog pricing is updated daily and should reflect current pricing. Should there be any kind of price discrepancy we will notify you immediately. We will continue to do our best to minimize increases and offer all of our products at the best possible prices. All prices are subject to change without notice.

OPEN ACCOUNTS

Aircraft Spruce has long served many companies, schools and government agencies on an open account basis. Established companies can apply for an open account by submitting a credit application including all company data and at least three business references and bank information. Credit application forms available on request. Open account terms are net 15 days after invoice date.

DEALER/OEM DISCOUNTS

We have offered discounts to our regular dealers and FBO's for many years for resale purposes, and we welcome the addition of new dealers to best serve aviation consumers worldwide. Due to the very competitive and low margin nature of most of the prices shown in this catalog, all discounts are based on volume purchasing. Discounts for many items are shown below the product in the catalog. Discounts for items with discounts not shown in the catalog or for larger quantities than those listed can be quoted by mail, phone, or FAX upon request. You can be assured, as an aviation dealer, that you will receive the best possible net prices from Aircraft Spruce on all product lines that we carry. If you ever find a lower current advertised price on any product, just let us know and we'll beat it. Call for an Aircraft Spruce dealer application if interested in becoming a dealer for our covering supplies, hardware, or Microflight products.

PRODUCT INFORMATION

For all products, call our main sales lines at 877-4-SPRUCE. Our sales representatives will consult with other staff members or call the manufacturer of the product to get you the answer you need as quickly as possible. We are here to help!

SPECIAL ORDERS

Over the years, one of the services that our company offers that seems to be most appreciated by our customers is our willingness to research and provide quotations for special items. Other supply firms tend to discourage special requests due to the time and effort it takes to find these items, and request that customers order "catalog items" only. We have always taken a different approach and welcome requests for non-catalog items. Call or write and provide as much information as possible including make, model, serial number of aircraft and exact part number or product you need, plus your credit card number. Within 24 hours if at all possible, we will advise you of the price and delivery time on the item, at which time you can place your order if acceptable. Once an order is placed for a special order item, it cannot be cancelled or returned and must be paid in advance. If we cannot drop ship your special order, then freight charges from the factory to our warehouse will be added to your invoice. Our goal is to provide you with everything you need - if you do not find it in this catalog, let us know and we'll find it for you!

PRODUCT WARRANTY

Aircraft Spruce & Specialty Co.'s obligation is limited to repair or replacement of the purchased product only, and under no circumstances shall Aircraft Spruce & Specialty Co. be liable for any loss, damage, injury, cost of repair or consequential damages of any kind in connection with the sale, use or repair of any product purchased from Aircraft Spruce & Specialty Co. Products sold are subject to manufacturer's warranty policy. Defective merchandise or out of box failure of product is repaired or replaced at manufacturer's option. Avionics, electrical, instruments, or similar products that are defective are subject to manufacturer's warranty only, and will not be replaced immediately from Aircraft Spruce inventory.

WAIVER OF LIABILITY AND INDEMNIFICATION AGREEMENT

Inasmuch as Aircraft Spruce & Specialty Co. has no opportunity to supervise the manufacture, installation or maintenance of the parts supplied by it, nor any opportunity to participate in the design or manufacture of the various certificated and homebuilt aircraft in which its parts are utilized, the purchaser by placing an order and accepting said merchandise from Aircraft Spruce & Specialty Co. agrees that all materials purchased will be used solely at purchaser's risk and that purchaser will indemnify and hold Aircraft Spruce & Specialty Co., its owners and employees, free and harmless from all loss, liability or damage resulting from claims brought by any reason of any alleged failure or defect of any part or parts supplied by Aircraft Spruce & Specialty Co.

SPRUCE ONLINE



Aircraft Spruce Online provides customers with up to the minute account and order status utilizing their own personal computers. The Aircraft Spruce Web Site provides information on many of the products contained in this catalog, real time access to account information, open order status and filled order history available daily. Confirm order on line in real time as they are processed, and view backorder status and product availability. In addition, our partnership with UPS provides you with up to the minute shipping information including package status, scheduling, and delivery exception.

www.aircraftspruce.ca

SHIPPING TIME

Orders placed by 4:00 pm EST and 4:00 pm PST Monday-Friday for "off-the-shelf", in-stock items are normally shipped same day from the respective location. Our shipping departments are closed on Saturdays and Sundays. Although we stock the vast majority of the items in our catalog, we cannot assure that they will all be on hand at all times. We ship every order as quickly as possible, and in the event of a delay, be assured that we are working hard to get your order shipped promptly. Due to order volume during holidays, we cannot guarantee that all orders placed can ship on the day after the holiday closure. Orders for spruce, tubing and other special cut products may take a few days to ship depending on order volume. Special order products ship base on the lead times of each manufacturer. Note: Special Instructions may delay shipment of your order.

CRATING FEE

Please note that to ensure all full sheets of aluminum are delivered in good condition, a crating or sheet pack fee will apply. For 4' x 12' sheets, and any 4' x 8' or 4' x 6' shipment weighing over 100 lbs, a \$85.00 fee will apply for a custom shipping crate to protect the material. For all 4' x 8' and 4' x 6' aluminum orders weighing under 100 lbs, a \$45.00 fee will apply for a honeycomb reinforced shipping container to protect the material.

ADDING ON TO AN ORDER

In order to ensure efficient, accurate processing of orders in the warehouse, we have several restrictions for adding on to placed orders. The restrictions include:

- Orders that have "Packed" or "Invoiced" status
- Orders qualifying for free shipping
- Orders placed by PayPal
- Orders containing special order items

We have also implemented a 1:00 pm local time cutoff for add-ons at the respective origin warehouse on the day the order is shipping.

If the order has an "open" status and it is before the 1:00 pm cutoff, you can add on to it using the website in the "Order Self Help" screen or by calling our Customer Service department. If we cannot add products to the open order due to the restrictions listed above, we will be glad to take a new order for the additional products.

CERTIFICATE OF CONFORMANCE AND FORM 8130 (EXPORT)

Aircraft Spruce provides you with its own Certificate of Conformance for our products at no charge. This is noted on every invoice. Factory certification and test reports are available on some items and Form 8130 are available on FAA approved products. A cost of \$100 per product is charged to secure these forms. Please inquire at time of order if test reports are available for the items you are ordering. If available, the forms must be requested at time of order and the product must be special-ordered from the factory with the forms. These forms cannot be furnished after you receive the product. Anticipate shipping delays if Form 8130 is requested. Do not order products using catalog part number if you require form 8130, as you will receive standard parts without the form. Simply describe the part and specifically request Form 8130. Due to delays and costs involved in furnishing these forms, we strongly suggest that you check to see if the Aircraft Spruce Certificate of Conformance will be acceptable in lieu of Form 8130.

AIRCRAFT SPRUCE GIFT CARDS



Do you want to give an aircraft builder or pilot a gift from Aircraft Spruce for a birthday, holiday, or another special occasion and don't know what to get? Let them decide. Give one of our sales representatives a call at (877) 4-SPRUCE and order an Aircraft Spruce Gift Card for any dollar amount you want. The cards are valid indefinitely and can be used toward the purchase of any products sold by Aircraft Spruce. These cards are very popular and are a gift that is sure to please any aviator. Available in any denomination. If selecting USPS First Class Mail, we'll ship any gift card only order prepaid within the United States and Canada. Gift Cards are valid at all Aircraft Spruce locations.

AIRCRAFT SPRUCE & SPECIALTY CO.

A COMPANY HISTORY



Bob and Flo Irwin

The foundation for what is now Aircraft Spruce & Specialty Co. dates to the summer of 1956 when Flo and Bob Irwin founded Fullerton Air Parts at Fullerton Municipal Airport in Southern California. Bob, born and raised in Kansas City, MO., a pilot since the 1940's and active in the CAP and other aviation groups, knew airplanes and the parts that were needed to keep them flying. Flo, a native of Rochester, New York, had no aviation background but learned the business quickly and knew what it would take to keep customers coming back... fair prices and good service. Fullerton Air Parts grew into one of the largest retail aircraft parts suppliers in the western states during the next nine years.

In 1965, Bob and Flo Irwin sold the business and founded another one which sold only one product, aircraft grade spruce lumber for aircraft construction and restoration. Aircraft Spruce Co. quickly added more products to its small catalog and adopted the name Aircraft Spruce & Specialty Co., with a goal to offer everything pilots and aircraft builders need. As Aircraft Spruce served more customers and more and more products were added, staff grew from 2 in 1965 to over 300 today.



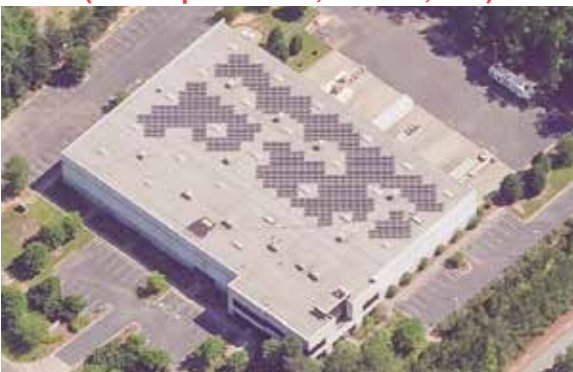
**201 West Truslow Ave, Fullerton CA.
Home of Aircraft Spruce from 1973 to 1997**

Jim Irwin, Bob and Flo's older son, grew up in the business, working in jobs such as cutting metal and spruce, pulling and shipping orders, and managing kit programs such as the Vari-Eze back in 1975 while still in college. Graduating from California State University at Fullerton in 1978 with a degree in business administration (marketing), Jim acquired the company and became president in 1980. Jim's wife Nanci, who graduated with an accounting degree from the University of Southern California in 1977, is vice-president and works full time managing the company's accounting and data processing departments. Jim Irwin has logged over 5000 hours as a multi-engine, instrument rated pilot since 1976 and Nanci Irwin is a licensed private pilot as well. They fly the company Cessna Conquest 425 extensively on business throughout the Southwest. Jim and Nanci Irwin have four children: Mike, Krissy, Jeff, and Rob, and the three boys are all members of the Aircraft Spruce management team. Mike and Jeff are pilots and fly the company's Navion Rangemaster.



**Present Home of Aircraft Spruce West
(225 Airport Circle, Corona, CA.)**

Flo and Bob Irwin, along with Jim's younger brother John, moved to Lake Havasu City, Arizona in the fall of 1983 and founded ACS Products Co., which manufactures a line of products which is distributed by Aircraft Spruce. Flo Irwin passed away on June 10, 1989, but the legacy of this warm, outgoing, and talented businesswoman lives on in the businesses she founded and built to serve the aviation community. John Irwin, his wife, Frances, and Bob Irwin now manage the ACS Products Co. operation and for their Cessna 182 out of Lake Havasu Airport. Bob Irwin was an instrument rated pilot with more than 2000 hours logged and based his 1968 Navion Rangemaster at Lake Havasu City until May 2000 when Bob retired as a pilot, after fifty years of flying, and moved the Navion to Chino Airport for his grandchildren to fly. Prior to acquiring the Rangemaster in 1976, Bob owned a Vultee BT-13B and a 1949 Ryan Navion. Bob Irwin passed away on June 26, 2015 at the age of 95, after being active in general aviation as a pilot and businessman for over 65 years.



**Present Home of Aircraft Spruce East
(452 Dividend Drive, Peachtree City, GA)**

Aircraft Spruce was housed in downtown Fullerton, CA. from its founding in 1965 until late 1997. The last 24 years in Fullerton the company was operated in a historic Fullerton former citrus packing house, which we eventually outgrew. In the fall of 1997, Aircraft Spruce moved to a new, 62,000 square foot facility in Corona, California. In the Spring of 2004, Aircraft Spruce East moved to a new 56,000 Sq. Ft. facility in Peachtree City, GA from its old home in Griffin, GA. Aircraft Spruce Canada was opened in Toronto in December 2006, and moved to a new facility at Brantford Airport in Ontario in late 2008. In late 2012 Aircraft Spruce Canada moved into a new 20,000 square foot facility at Brantford Airport. In September 2018 Aircraft Spruce Alaska opened in Wasilla. In 2019 Aircraft Spruce Midwest opened in a 55,000 sq. ft. distribution facility in West Chicago, IL. Regional warehouses are also located in Middletown, PA, Fort Worth, TX and Chandler, AZ. We are proud of the tradition of our company that now dates back some 55 years, and are pleased to have had the opportunity to help aviators around the world build the plane of their dreams. Our growth, from a single room in 1965 to over 200,000 square feet in eight facilities that we have today, has been a direct result of the loyalty and patronage of our customers. Our goal is to continue to provide the very best in products, prices, and customer service to our friends in the years to come.

**CELEBRATING 59 YEARS OF SERVICE TO AVIATION!
1965 – 2024**

THE AIRCRAFT SPRUCE MANAGEMENT TEAM



JIM IRWIN
President



NANCI IRWIN
Vice President



MIKE IRWIN
Vice President
Procurement



JEFF IRWIN
Vice President
Operations



ROB IRWIN
Vice President
Marketing



TOM MARRACCI
Director of
Technology



DON ARRINGTON
Director of
Operations East



LOIS JONES
Human Resources
Manager



JACK SAMUELS
Sales Manager



ANDREW BUCHANAN
Operations Manager



VERONICA BELTRAN
Customer Service
Manager



TAWNY CASTILLO
Logistics Manager



DEBBIE MOSS
Finance Manager



JOSH SOLIS
Warehouse Manager
West



ROSEMERY MAMANI
Accounting Manager



RYAN REICHMUTH
Branch Manager
Arizona



VINCE MARSH
Branch Manager
Illinois



LANCE YOUNG
Branch Manager
Pennsylvania



JOHNNY MYLES
Branch Manager
Texas



VICKIE STANG
Branch Manager
Nebraska



DAVE PUSKAS
Branch Manager
Canada



MICHELLE ROLL
Warehouse Manager
Alaska



RANDY DURHAM
Branch Manager
Alaska



ANDREY FERRELL
Warehouse Manager
East



JENNIFER JOOSTE
Purchasing Manager



NICK WOOD
Product Support
Manager

AIRCRAFT SPRUCE REGIONAL LOCATIONS



**AIRCRAFT SPRUCE ALASKA
PALMER, ALASKA**



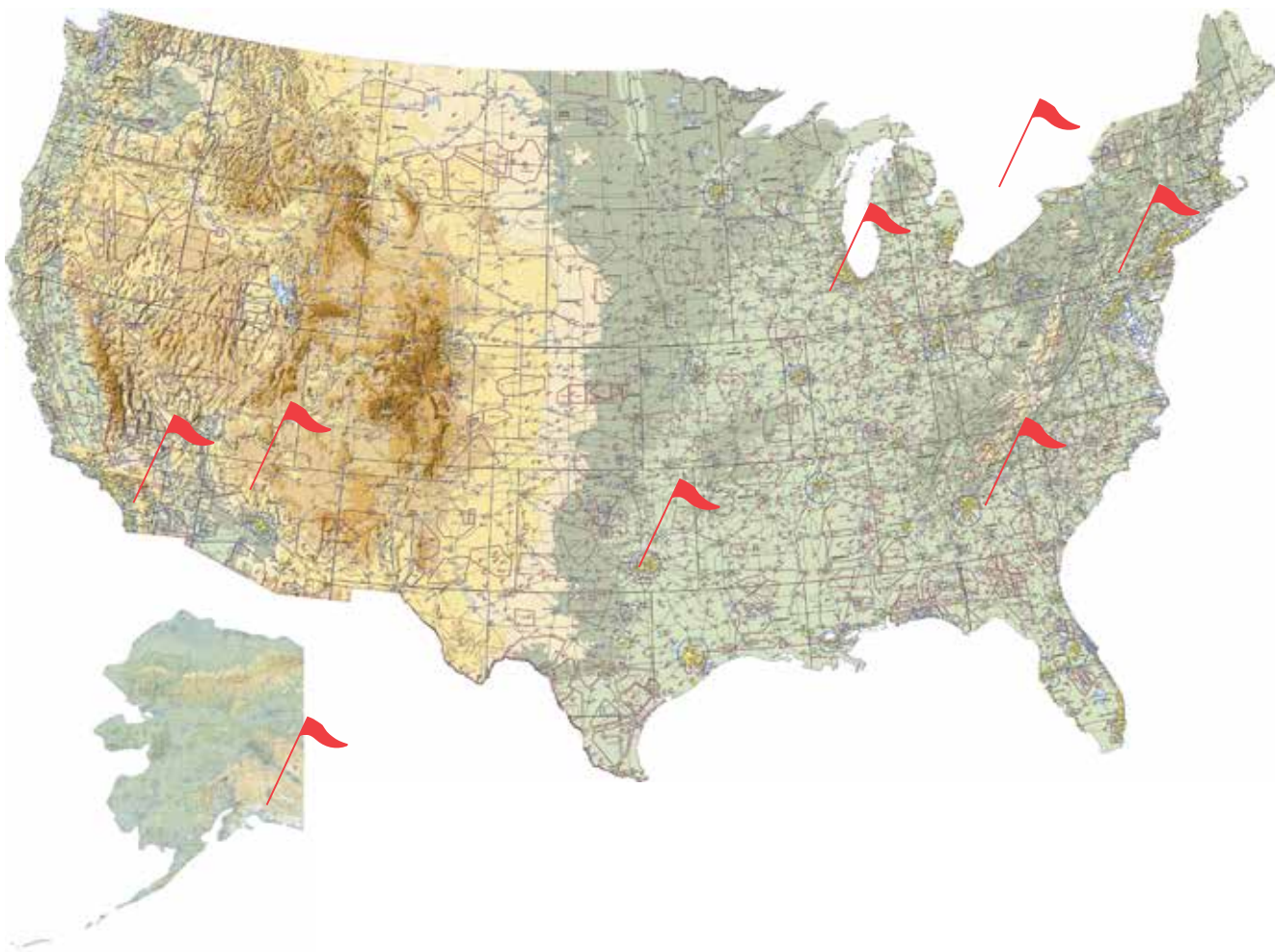
**AIRCRAFT SPRUCE MIDWEST
WEST CHICAGO, ILLINOIS**



**AIRCRAFT SPRUCE NORTHEAST
MIDDLETON, PENNSYLVANIA
(NEW LOCATION)**



**AIRCRAFT SPRUCE CANADA
BRANTFORD, ONTARIO**



**AIRCRAFT SPRUCE WEST
CORONA, CALIFORNIA**



**AIRCRAFT SPRUCE SOUTHWEST
CHANDLER, ARIZONA**



**AIRCRAFT SPRUCE SOUTH
FORT WORTH, TEXAS**



**AIRCRAFT SPRUCE EAST
PEACHTREE CITY, GEORGIA**

FRIENDLY, FAST, & EFFICIENT ORDER PROCESSING THAT'S THE AIRCRAFT SPRUCE WAY!

At Aircraft Spruce & Specialty Company, we handle every order with the same care and diligence that we did our first order back in 1965. Here is a glimpse of some of the many departments that process thousands of orders each week and ship them to our customers around the world.



Orders may be placed by mail, FAX, email, and online at www.aircraftspruce.ca, or as most customers prefer, by phone with one of our friendly, helpful sales persons. Your order is quickly input into our computer system and printed immediately in the warehouse.



Our large staff of order pickers receive the orders in the warehouse, fill the order and pass it along to the shipping department for careful packaging and shipment. We carry over 100,000 different inventory items!



Warehouse inventory is carefully arranged in computer part number sequence for fast and accurate order completion. As your single source supplier, Aircraft Spruce stocks lumber, plywood, metals, composites, hardware, instruments, tools, covering supplies, avionics....and everything in between! Walk-in customers are invited to visit our stores located at all of our Regional Distribution Facilities.



Orders for specially cut steel and aluminum tubing, sheet, bar and plate are no problem here, and are processed on a daily basis. Aircraft Spruce furnishes raw materials to large end users in huge quantities at volume discounts, as well as cut pieces as small as one foot to homebuilders. Whatever you need, we've got it!



Hand selected aircraft grade spruce lumber was our very first product, and remains one of our specialty products today. All of our spruce is certified to MIL-S-6073 and is custom milled, inspected and packaged according to customer specifications.



An average of 2,500 packages per day leave the Aircraft Spruce warehouses via UPS, Parcel Post, Federal Express, air freight or sea freight on their way to our customers throughout the United States and worldwide. Our state-of-the-art in-house computer systems with complete order tracking capability make Aircraft Spruce & Specialty Company the smart choice as your complete supplier for aviation materials and components.

AIRCRAFT KITS

COZY MARK IV



Cozy Mark IV Plans.....P/N 01-00178

CHRISTAVIA



MK-1 Plans.....P/N 01-00663
MK-2 Plans CompleteP/N 01-00692

STARDUSTER



Starduster One SA 100 Plans.....P/N 01-00425
Starduster One SA 300 Plans.....P/N 01-00424
Acroduster Too SA 750 Plans.....P/N 01-00427
Starlet SA 500 Plans.....P/N 01-00428
V-Star SA 900 Plans.....P/N 01-00429

WITTMAN TAILWIND



Wittman Tailwind Plans.....P/N 01-10007

EVANS VP-1 VOLKSPLANE



VP-1 Plans and Handbook.....P/N 13-11560

PIETENPOL AIRCAMPER



Original Pietenpol Air Camper Plans.....P/N 01-01307

SKYOTĚ



Skyote Plans KitP/N 01-01512

BABY GREAT LAKES, SUPER BABY LAKES, AND BUDDY BABY LAKES



Plans for Baby Great Lakes.....P/N 01-10010
Plans for Super Baby Lakes.....P/N 01-10011
Plans for Buddy Baby Lakes.....P/N 01-10012

ONE DESIGN



One Design Plans (w/ ID Plate).....P/N 01-06010-C

OTHER KITS & PLANS

- ACRO SPORT • ACRO SPORT II • ACROLITE • AQUAJET-X
- BAKENG DEUCE • BK FLIER • BREEZY • CYGNET
- DAISY MAE • ERACER • FLY BABY • GP-4 • KR-1 and KR-2
- MEYER'S LITTLE TOOT • MORIN M85 • OSPREY
- PAZMANY PL-9 STORK • POBER (CORBEN) JUNIOR ACE
- TWO-PLACE • POBER PIXIE - SINGLE SEAT • POBER SUPER
- ACE - SINGLE SEAT • SKYBOLT SONERA1 • SONEX
- VOLMER VJ-22 AMPHIBIAN • ZENITH STOL CH-750

SEE WEBSITE FOR KITS & PLANS!

SEE WEBSITE FOR MATERIAL KITS FOR THESE AIRCRAFT!