

ATTACHING HARDWARE FOR CONTROLS

WIRE GRIP

Is a unique fitting which securely attaches to solid wire end push-pull cables. Uses a "pin vice" gripping action to attach a cable. The 5/8" long 10-32 threaded end will attach a clevis, ball joint, or other hardware for use with mixture controls, carb heat box, cabin air, or other applications, resulting in a clean, professional installation.

For .040-.050 dia cablesP/N 05-08101
 For .055-.062 dia cablesP/N 05-16000
 For .078 dia cables.....P/N 05-16001
(Use P/N 05-16001 on A790, A820, A960, and A950 ACS controls)
(Use P/N 05-08101 on ACS A730, A740, A1770, and A1780 controls)



AN486 TERMINALS

With 1/4-28 female threads. Fork hole dia. 3/16". AN486-3P has 17/64" fork opening. AN486-4P has 9/64" fork opening.

P/N AN486-3P
 P/N AN486-4P



AN665-21R TERMINAL

Has 10-32 threads and 3/16" dia. fork hole. Furnished with clevis pin, cotter pin and locknut.

P/N 05-02500



BOLT TYPE TERMINAL

Special 3/16" dia. bolt with drilled shank. With hex nuts and washers. Use instead of "bug" nut.

P/N 05-16100



CONTROL HOUSING CLAMPS

AN742 plain loop type clamps to secure housing of throttles, dash controls, Bowden cable, etc. to airframe.

AN742-D3 for 3/16" O.D
 AN742-D4 for 1/4" O.D



SLOTTED BRACKET CONTROL MOUNT

Notch of end fitting locks into slot of bracket to secure control. Steel Construction.

P/N 10465



CLAMP STYLE CONTROL MOUNT

Protruding "finger" in clamp holds control in position. Two-piece steel clamp and base.

P/N 10464



WIRE STOP

Wire Stop is ideal for securing cable ends. Removable and completely reusable.

OD 1/4" ID 8-32 Length 3/8" for cable up to 3/32"
 P/N 15-06291



FLAP HANDLE COVER

This flap handle is durable, flame-retardant, and fairly easy to install. The end result is a 1 foot section of tubing that will fit on any flap handle (Or any other round handles) that is 3/4" to 7/8" in diameter. The exposed length on the handle should not exceed 12 inches subtracting the length of the grip. It is simple to install with a high heat blow dryer or heat gun. When installed it will have a dark gray texture and be highly resistant to minor dings. This tubing will conform to small radius bends and cover most scratches and minor surface imperfections. P/N 05-06920



STANDARD FLAP HANDLE GRIP

This is a standard Black plastic grip that can be installed on any round 7/8" shaft. It has a cutout in the end for a release button. It is ribbed all the way around. P/N 05-06923



RED FLAP HANDLE GRIP

This is a standard Red plastic grip that can be installed on any round 7/8" shaft. It has a cutout in the end for a release button. It is ribbed on the top and has finger grips on the bottom. P/N 05-06922



RUBBER HEX CUT FLAP HANDLE GRIP

This is a special Rubber grip that can be installed on any round 7/8" shaft. It has a cutout in the end for a release button. It has a raised Hex cut pattern all around the grip. P/N 05-06921

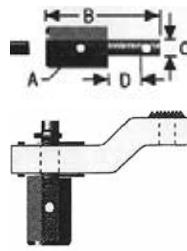


CARGO TIE-DOWN DOUBLE STUD FITTING

Double stud round ring.....P/N 05-13140
 Double stud Twisted ring.....P/N 05-13141



CABLE END "B" NUT



This universal NAP assembly will eliminate bent or smashed push-pull cable ends and get a strong hold at the same time. The cable end lays in a machined channel at the bottom of the screw hole. Tightening the compression screw snugs down on the cable end thus eliminating any potential crimping or smashing of the cable. Eliminates wear, possible cable breakage and enhances smooth push-pull operation. Complete with washers and cotter pin. All stainless steel, computer machined and easy to install.

Description	A	B	C	D	Part No.	Part No.
Throttle, Wt., 26oz	.070	.825	.186	.241	05-16210	---
Mixture, Wt., 29oz	.086	.825	.249	.255	05-16230	---
Cabin Heat, Wt., 26oz	.070	.645	.249	.093	05-16240	---
Carb Heat	.070	.645	.186	.093	05-16245	---

DISCOUNT: LESS 20% ON 25 OR MORE.

CABLE SAFE

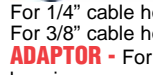


A Safe "No-Slip-Grip" for your thru bulkhead cables. This unit prevents your throttle, mixture, choke or any push-pull cable from slipping at the firewall/ bulkhead location. Machined from lightweight aluminum, and final blue anodizing. Installation is simple with a drill and wrench. Once installed, the cable is threaded and the end nut is snugged down on the cable casing for positive encapsulation. Designed specifically for the aircraft industry, these fittings can be installed on virtually any application that requires a solid hold on any cable assembly with a rigid outer case. Thousands of applications: auto, boat, race car, motorhome. Used with 1/4" thru 7/32" diameter cable.

Cable Safe, Wt.: .84 oz.P/N 05-16250/ea.

DISCOUNT: LESS 20% ON 25 OR MORE.

CABLE SAFE II - This Fitting is designed for use on coaxial type control cables. It has a two piece design to allow it to be placed over the cable inserted thru the firewall & tightened down, providing a positive lock.



For 1/4" cable housingP/N 05-16252/ea.
 For 3/8" cable housings.....P/N 05-16253/ea.

ADAPTOR - For the cable safe to adapt down to 3/16" diameter cable housings.P/N 05-16251/ea.

WIRE SWIVELS



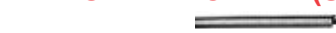
OD: 1/4"; ID: 8-32; Length: .240"; Cable Dia.: 3/32 Max
 Mfr. No. 2361.....P/N 06-01282

CONDUIT RETAINER - STRAIGHT



OD: 5/16-24; ID: .260; Length: 2; Conduit: 7/32
 Mfr. No. 2386.....P/N 06-01281

BOWDEN CABLE (SOLID WIRE ENDS)



Spiral-wound galvanized wire casing. Use for push-pull controls of any length. Inside cable dia. .078. Outside casing diameter 7/32".
 P/N 05-15500/ Ft.

BOWDEN CABLE INNER WIRE



Stainless stainless steel wire .078" diameter. Sold by the foot.P/N 05-15510
 Bowden cable housing.....P/N 05-15505

BOWDEN CABLE CLAMP



Designed to provide a simple method of anchoring a typical wire wound cable. Used in anchor hole of 7/16" diameter.
 For 3/16" Bowden Cable.....P/N 05-15705/ea.
 For 7/32" Bowden Cable.....P/N 05-03287/ea.

BROWNLINER STYLE SEAT/CARGO TRACKS



Aircraft Spruce now carries Brownliner style seat track and extrusion for modifications and homebuilder, or experimental aircraft customers. The new seat track can be ordered as slotted extrusion with or without 0.785" diameter machined openings every one inch, and can be purchased in anodized standard lengths or by the inch. They can also be purchased in non-anodized bulk lengths from 75" to 180". Compatible with common MS33601 .73" diameter style fittings, the new tracks are precision machined, from aerospace grade 7075-T6511 aluminum with full traceability and material certification.

MFR Part No.	Description	Part No.	Price
6656-6	6" 6656-6	05-07163	---
6656-12	12" 6656-12	05-07164	---
6656-18	18" 6656-18	05-07166	---
6656-24	24" 6656-24	05-07167	---
6656-36	36" 6656-36	05-07168	---
6656-48	48" 6656-48	05-07169	---
STE105	Extrusion STE105 (Sold per inch)	05-07172	---

