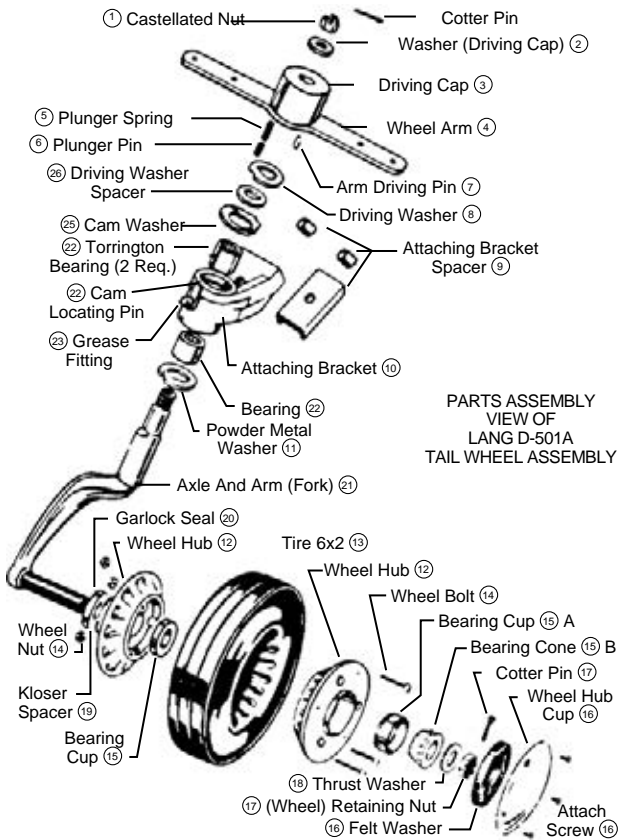


TAILWHEELS



LANG TAILWHEEL PARTS

Ref #	Lang No.	Qty	Part No.	Price
1&2	A-501,A521	1	06-13601	---
3,5,6,7	06-13637, 06-13656, A-513	1	06-01570	---
4	A-504	1	06-13604	---
8	A-509	1	06-13608	---
9	A-512, A560-1, A560-2	1	06-13609	---
11	A-516	1	06-13611	---
12	A-544, A545	2	06-13800	---
13	A-590	1	06-15800	---
14	A-548, A549	3	06-13614	---
15A	A-518	2	13287	---
15B	A-519	2	13286	---
16	A-522, A-523 & A-524	1	06-13600	---
17	A-521	1	06-13617	---
18	A-531	1	06-13618	---
19	A-546	1	06-13619	---
20	A-547	1	06-13620	---
21	C-503	1	06-13621	---
22	A-554	2	06-13622	---
23	A-525	1	06-13623	---
25	A-511	1	06-13625	---
26	A-510	1	06-13626	---
--	(1) C501, (1) A508, (1) A525, (2) A554	1	06-03155	---

Hub Assembly (2 #12 Hub Halves, 3 #14 bolts & Nuts)
P/N 06-13800
Hub Assembly with Bearing Cups.....P/N 06-13900
Wheel Assembly (Hub Assembly & 2 Bearing Cups & Cones)
P/N 06-14000
Wheel & Tire Ass'y (Wheel Ass'y & 6 x 2 Tire)
P/N 06-14100

TAILWHEEL SPRING NON-PMA PART

ABI-3239-1 Scott 3200 tailwheel spring.
Non-PMA partP/N 05-27212

SHIMMY DAMPENER 3400 STRAIGHT ASSEMBLY



long pawl tailwheel assembly

ABI StraightP/N 05-27237
ABI BentP/N 05-27235
Scott Straight.....P/N 05-27238
Scott Bent.....P/N 05-27236

SHIMMY DAMPENER 3450-23 STRAIGHT ASSEMBLY



Compact and lightweight assembly that hydraulically dampens oscillations in the tailwheel to eliminate tailwheel shimmy and stabilize your tailwheel. **Features:** • Smoother landings • Reduced aircraft wear and tear • No headache installation & maintenance • Includes STC • Not compatible with the T3 Tailwheel Suspension • A long pawl tailwheel assemblyP/N 05-27239

THE LANG TAILWHEEL – FAA APPROVED STEERABLE – FULL SWIVEL



THE ONLY TAILWHEEL TO MEET THE EXACTING REQUIREMENTS OF THE CHRISTEN EAGLES - The Lang Model D-501-A Tailwheel is full swivel, fully automatic and steerable. It is impossible to throw the Lang tailwheel into full swivel unintentionally regardless of rough field conditions or cross winds. This tailwheel will not lock in any position except steerable, but releases easily when plane is pushed sideways or backwards by hand or when maneuvering plane on ground using brakes. The Lang tailwheel fits both 1-1/4" and 1-1/2" leaf springs. Drop forged, heat-treated 4130 chromoly steel fork of single arm type. The cast aluminum wheel is grease packed for 100 hours service. The 6 x 2.00 solid rubber tire has interior wire reinforcement for added strength. Manufactured by ACS Products Co. under FAA-PMA. The Lang tailwheel is FAA-approved for installation on many light aircraft including Aeronca 7AC, Piper J-3 and PA-12, Cessna 140, Luscombe and Taylorcraft. Comparable to Scott Model 2000. Wt. 6 Lbs. **OEM & DISTRIBUTOR PRICING AVAILABLE**P/N 06-00398

REPLACEMENT WHEELS FOR HOMEBUILDER'S SPECIAL TAILWHEELS



Replacement wheels with tires & bearings for the Homebuilder's tailwheels shown above.
4x1.5x5/8 BB Natural .. P/N 06-03500
4x1.5x3/8 BB Natural .. P/N 06-00067
6x2.125x5/8 Balloon* .. P/N 06-03600
*This is a solid Tire

LONGLIFE SEALED BALL BEARINGS

These high quality bearings are superior to standard bearings furnished with homebuilder tailwheels P/N 06-00060

*Can only be used on single arm 4" and 6" tailwheels.

RE-BUILD KIT FOR 3400 SERIES TAILWHEEL



Re-Build Kit for 3400 Series Tailwheel
P/N 05-27228

TAILWHEEL BOLT FOR ABI 3200 / 3224A / 3200B SERIES



Bracket assembly is compatible with: 3200, 3224A, and 3200B seriesP/N 05-27215

SPACER PLATE FOR ABI 3400B FORK



Spacer Plate; Compatible only on a ABI F2 3400B fork. 3 screws that hold this in place are MS24693S272.
P/N 05-27216

AIRFRAME ALASKA LONG PAWL



Compatible with 3200, 3224A, 3200-3, 3200B, 3200-3B, 3400, 3425-5, 3425-13, 3450(T), 3450-3, 3450-17, 3450-23, and 3400B series.

ABI-3200 AND ABI-3224A tailwheel assemblies and parts are direct replacements for the Scott 3200/3200A. Our assemblies and parts are FAA-PMA'd products and have STC's for well over 35 makes of Aircraft availableP/N 05-27213

LG