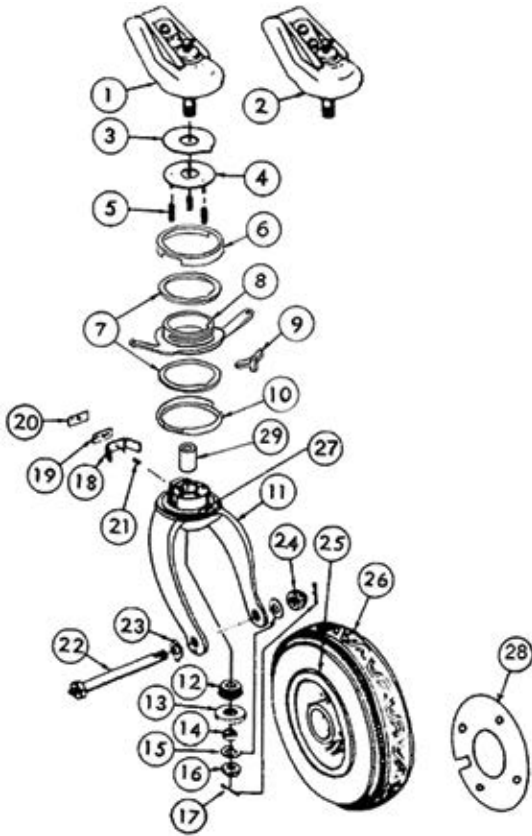


TAILWHEELS

REPLACEMENT PARTS FOR SCOTT 3200 TAILWHEEL

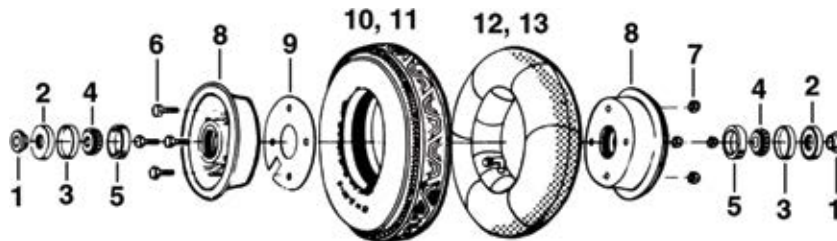
The Scott Model 3200 tailwheel, with 8" pneumatic tire, is designed to give years of trouble-free service. The swivel mechanism is sealed to keep out water, sand and mud. Grease fittings are provided for lubrication. Bracket fits 1-3/4" wide tailwheel leaf spring. Wt. 7-1/2 lbs. Attaching hardware not furnished.



Item No.	Description	No Req'd	Part No.	Price
2	Bracket Assembly ABI-800613	1	06-01291	---
3	Washer, Thrust	1	3207	---
4	Thrust Plate Assembly	1	3234	---
5	Spring, Compression	5	3233	---
6	Dust Cap	1	3235-2	---
7	Washer, Thrust	2	3206	---
8	Arm Assembly	1	3214	---
9	Pawl	1	3219	---
10	Dust Cap	1	3235-1	---
11	Fork Assembly, ABI-3244K	1	06-00736	---
12	Cone Bearing	1	13286	---
13	Retainer, Grease	1	1863	---
14	Spacer	1	2504-1	---
15	Washer, AN960-816	2	AN960-816	---
16	Nut, Shear AN320-8	1	AN320-8	---
17	Pin, Cotter	2	18482	---
18	Spring	1	3222	---
19	Spacer	1	3258	---
20	Spacer	1	3258-1	---
21	Pin	1	3257	---
22	Axle Ass'y	1	3236	---
23	Washer, Lock	1	3225	---
24	Nut, Castle, AN310-8	1	AN310-8	---
25	Wheel Assembly, ABI-3244-00	1	06-00745	---
27	Pin, 3226	1	3226	---
28	Gasket	1	2602	---
29	Bushing	1	3205	---

SCOTT MODEL 2600 8-INCH PNEUMATIC TIRE

The Model 2600 8" pneumatic tire and wheel assembly is used on the 3200, 3250, 3400 and 3425 Series tailwheel assemblies. The Model 3245-1 10" pneumatic tire and wheel assembly is used on the 3425 & 3450 Series tailwheel assemblies. Total Wt. 3 lbs. 13 oz.



Item No.	Part No.	Description	8" Assembly P/N 2600	10" Assembly P/N 3245-1	Price Each
1	3227	Spacer	2	2	---
2	1863	Retainer, Grease	2	2	---
3	1862	Spacer	2	2	---
4	13286	Bearing Cone (A-4050)	2	2	---
5	13287	Bearing Cup (A-4138)	2	2	---
6	18438	Bolt	4	4	---
7	33478-202	Nut, Self Locking	4	4	---
9	2602	Gasket	1	1	---
10	3228	8" Tire	1		---
11	06-08100	10" Tire		1	---
12	3223	8" Tube	1		---
13	3247	10" Tube		1	---

SCOTT LEAF SPRING SPACERS AND SPRING KITS

- 3241-3S - Spacer Only..... P/N 06-00406
- 3243-2 - Spacer Only..... P/N 06-00407
- 3241-1S - Adapter Kit - Converts 1-3/4" 3216 (1 3/4") bracket to 1-1/2" width..... P/N 06-00408
- 3239 - Heavy Duty Tension Spring Kit..... P/N 06-00008
- 3243-01 - Converts 1-3/4" Bracket to 1-1/4" Bracket. Used on 3200 Tailwheel..... P/N 06-00421